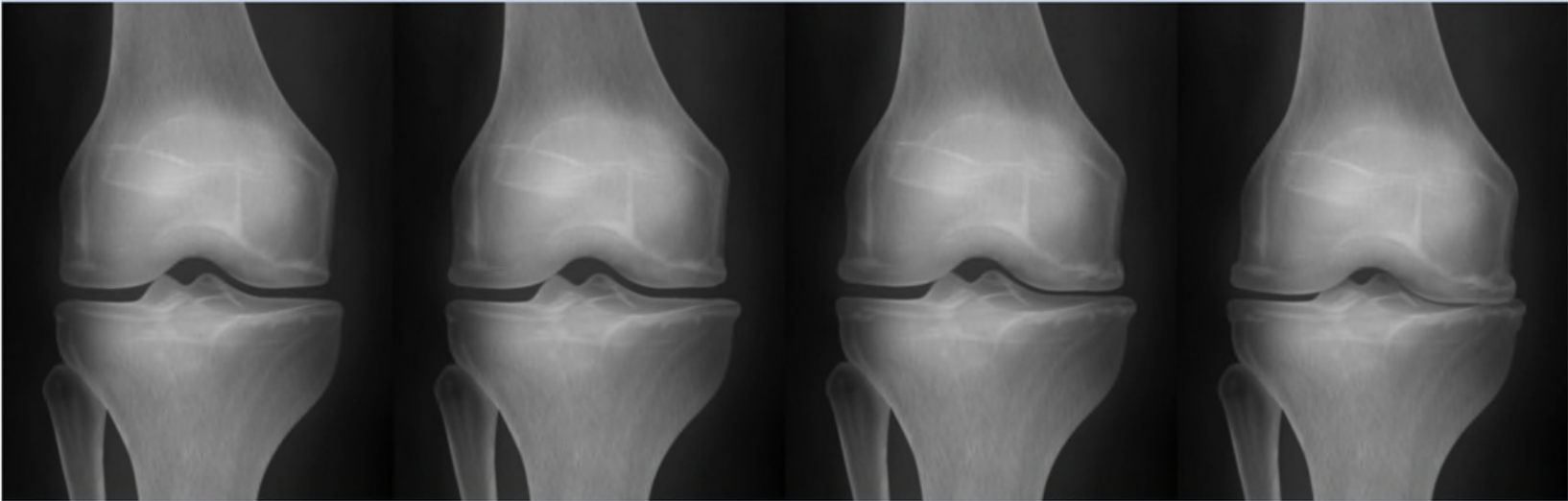


Kellgren-Lawrence (KL) grading scale



Grade 1

Grade 2

Grade 3

Grade 4

CLASSIFICATION	Normal	Doubtful	Mild	Moderate	Severe
DESCRIPTION	No features of OA	Minute osteophyte: doubtful significance	Definite osteophyte: normal joint space	Moderate joint space reduction	Joint space greatly reduced: subchondral sclerosis

The grading system focuses on **osteophyte** formation, joint-space narrowing, and bone **sclerosis**.

 **Kellgren-Lawrence Grading System**